



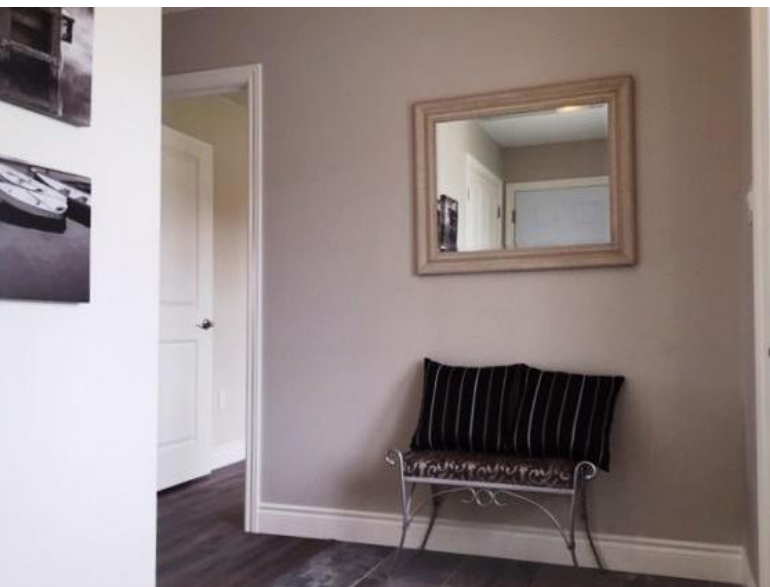
Contact Our Office Today

(Similar Model Shown)

For further information regarding Troon Estates or a personal viewing, please contact our office at: (519)797-5544

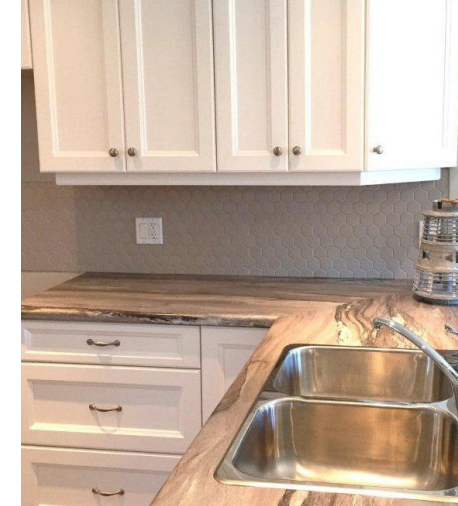
Now Reserving Models

Features include gas hot water radiant in floor heating, standard air conditioning & optional heat pump, inviting covered front door patio area, large foyer, 9' ceilings throughout unit, large patio from dining area plus master bedroom with ensuite bath. Optional 10' x 12' Sunroom upgrade is open to interior space. Single or double attached garage, with inside entry, depending on model chosen. Don't wait! Models are being chosen quickly, so reserve your unit today.



Royal LePage D.C Johnston Realty
Independently Owned & Operated, Brokerage
200 High Street, Southampton, ON N0H 2L0
519-797-5544 (office)

All offices are independently owned and operated, except those marked as "Royal LePage Real Estate Services Ltd., Brokerage", "Royal LePage West Real Estate Services" and "Royal LePage Sussex". Not intended to solicit currently listed properties or buyers under contract. The above information is from sources believed reliable, however, no responsibility is assumed for the accuracy of this information. ©2018 Brookfield Real Estate Services Manager Limited. All rights reserved.



From: \$364,900*

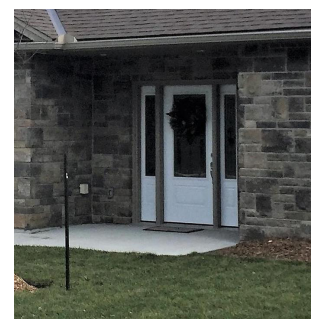
Troon Estates - 1050 Waterloo Street
Port Elgin Ontario
(Similar Model Shown)

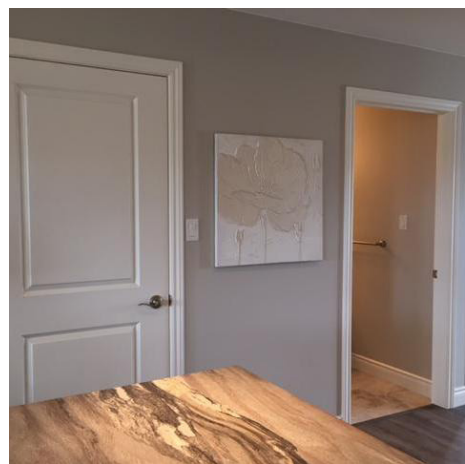
Finding your perfect home

IS WHAT I DO

Exciting New Townhouse Style Condos

Ideal opportunity to Simplify Your Lifestyle - These 2 & 3 bungalow & bungalow loft condominiums located at Summerside in Port Elgin may be just what you are looking for. Designed with easy low maintenance living in mind.





Troon Estates

(Similar Model Shown)

Details

Model 'A'	1236 sq.ft. / \$364,900*
Model 'B'	1380 sq.ft. / \$399,900*
Model 'C' (loft)	1666 sq.ft. / \$429,900*
End Unit Upgrade	Additional \$5,000*
Sunroom Upgrade	Additional \$22,000*
Covered Patio Upgrade	Additional \$9,000*
Bedroom(s)	2 (3 with Loft)
Bathroom(s)	4 + 3pc Ensuite
Building Style	Bungalow or Bungalow Loft
Garage	Single & Double Models Avail.
Exterior Parking	Double Concrete Drive
Exterior Finishes	Shouldice Stone
Foundation	Heated Concrete Slab
Monthly Fees	\$165 (A) / \$185 (B&C) Est.

*Prices Subject to Change

Features

Kitchen	Breakfast Bar
Dining Room	Walkout to Patio
Living/Dining Room	Soaring 9 ft ceilings
Sun Room (Optional)	10'3 x 9'9 - Open to Interior
10' Rear Patio	Spacious Concrete Patio
Flooring	Laminate & Ceramic (Standard)
Fireplace	Optional (Gas)
Front Entry	Covered Patio Area
Garage	Heated Floor (Optional)

Occupancy Starting

Summer 2019

Utilities

Heating Source	Radiant in Floor
Cooling System	Split A/C Unit Included
Sewer/Water	Municipal

