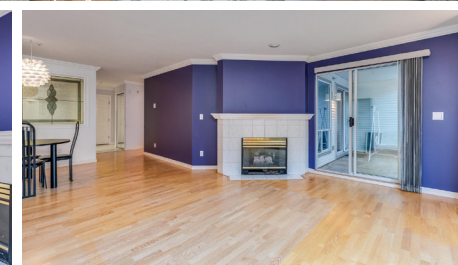
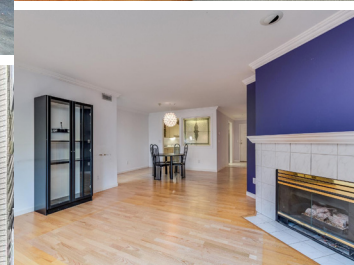
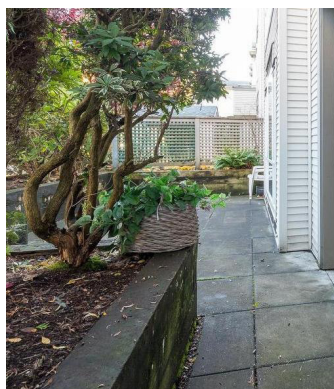




107 - 19122 122nd Ave
Pitt Meadows BC

EDGEWOOD MANOR
GROUND FLOOR CONDO

TWO BEDROOMS | TWO BATHROOMS



MARIE TAVERNA
REAL ESTATE PROFESSIONAL

604.802.7759
KMTaverna@gmail.com



KIM TAVERNA
REAL ESTATE PROFESSIONAL

604.351.0141
KMTaverna@gmail.com

TAVERNA REAL ESTATE GROUP

ROYAL LEPAGE WEST
REAL ESTATE SERVICES
2185 AUSTIN AVENUE
COQUITLAM BC V3K 3R9

604.939.6666

TAVERNAHOMES.COM



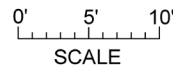
TAVERNAHOMES.COM



107-19122 122 AVE,
PITT MEADOWS
1127 SQ. FT.
CEILING 8'0"



NORTH

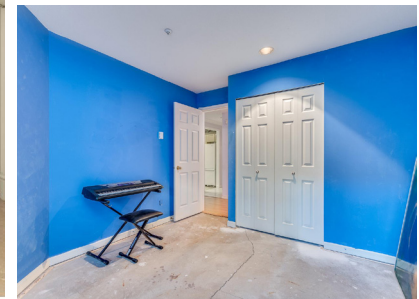


107-19122 122 AVE, PITT MEADOWS OCTOBER 4, 2024		
PREPARED BY PROPER MEASURE FOR THE EXCLUSIVE USE OF MARIE AND KIM TAVERNA. <small>PROPER MEASURE INC. IS A MEMBER OF THE REALTOR ASSOCIATION OF ALBERTA.</small>		
FLOOR	AREA (SQ. FT.) FINISHED	DECK / PATIO
SECOND	1127	916



Description

Welcome to Edgewood Manor. What a fabulous opportunity to move into this condo unit. This ground level home has two bedrooms and two full four-piece baths. Large windows let the natural light in. Extra large outdoor patio, imagine entertaining when the warmer weather arrives. The living room has a gas fireplace with sliders to your patio. The dining room is perfect for family dinners. Large kitchen with eating area. The primary bedroom has sliders to patio as well. Two closets in the walkway to the ensuite. In suite laundry room. In suite storage/pantry could be re-design for a cute home office. Two underground side by side par



FEATURES

Two Bedrooms	Large Windows/Natural Light
Two Full Size Baths	Four Pieces Each
Floor Space	1127 Square Feet
In suite Laundry	Pantry/Storage/Den Room
Two Side by Side Parking	Storage Locker
Ground Floor Unit	Two Large Patios
No Units on Either Side	Wheelchair Friendly
Appliances	ClthWsh/Dryr/Frdg/Stve/DW