

COZY & QUAINT

BEDS: 2+1

BATHS: 2

100 ACRE HOBBY FARM

MLS® 1181594

\$960,000

3668 ANGEL ROAD

Looking for an escape from city life? Dreaming about running your own business? How about starting a maple syrup co. and/or selling veggies for income? Welcome to this spectacular 100 acre property full of opportunity and character with beautiful flower beds, farming fields (drainage tiles), maple bush (approx. 2500 taps connected by pipeline - potential for more), and 2 ponds (1 pond trout stocked).



CHRISTY-ANN MOORE

Sales Representative
c 613-805-5905
christyann@sutton.com

RELAX AND UNWIND

BEDS: 2+1

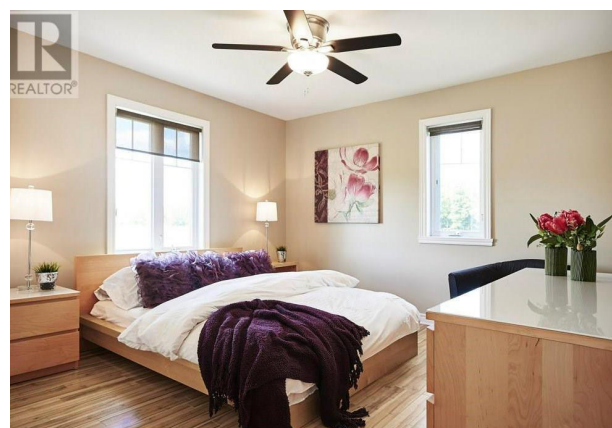
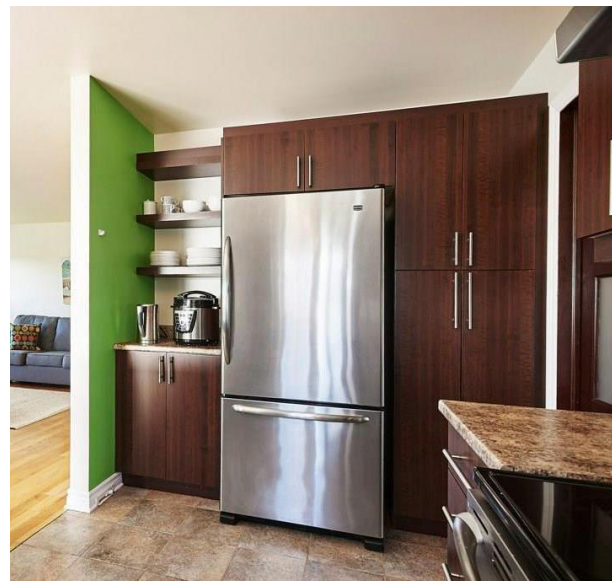
BATHS: 2

100 ACRE HOBBY FARM

MLS® 1181594

PROPERTY DETAILS

Total Bedrooms	2+1
Total Baths	2
Lot Size	1266 ft X 3438 ft
Access Type	Highway access
Amenities Nearby	Shopping
Appliances	Refrigerator, Dishwasher, Hood
Architectural Style	Bungalow
Basement Development	Partially finished
Basement Type	Full



OTTAWA

Sutton Group - Ottawa Realty
Brokerage
(613) 254-6580
1530 MERIVALE ROAD
OTTAWA, K2G3J7